

42176

TOWN PLACE, PHASE I OF VIA VERDE - P.U.D.

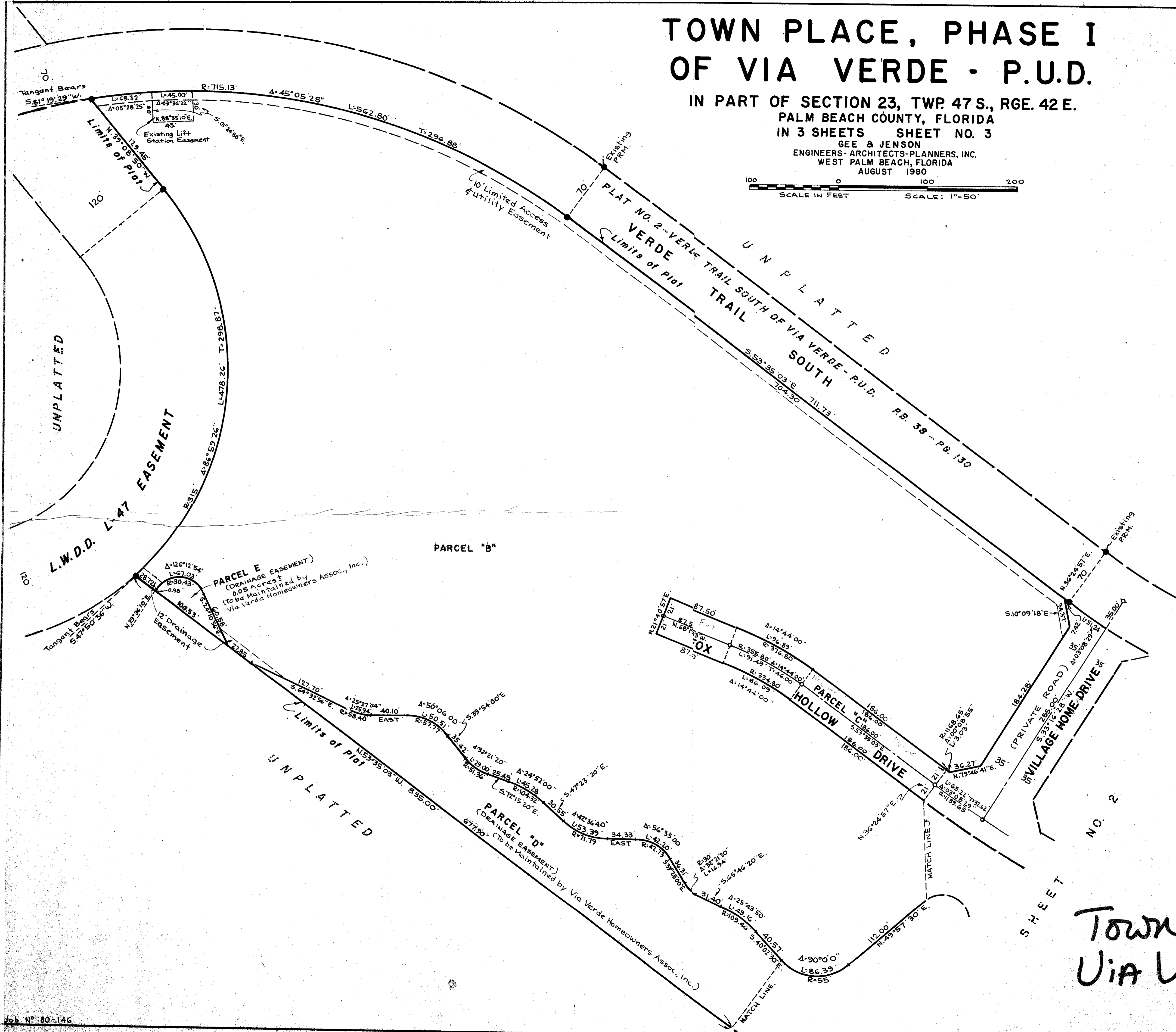
IN PART OF SECTION 23, TWP. 47 S., RGE. 42 E.
PALM BEACH COUNTY, FLORIDA
IN 3 SHEETS SHEET NO. 3

GEE & JENSON
ENGINEERS-ARCHITECTS-PLANNERS, INC.
WEST PALM BEACH, FLORIDA
AUGUST 1980



76

STATE OF FLORIDA
COUNTY OF PALM BEACH
This Plat was filed for record at _____ M
this _____ day of _____, 1981
and duly recorded in Plat Book No. _____
on page _____
JOHN B. DUNKLE, Clerk Circuit Court
By _____, D.C.



NOTES
All bearings shown hereon are relative to an assumed meridian used throughout Boca West and Via Verde.
Building Setback Lines shall be as required by Palm Beach County Zoning Regulations.
There shall be no buildings or other structures placed on Utility Easements.
There shall be no buildings or any kind of construction or trees or shrubs placed on Drainage Easements.
Easements are for Public Utilities, unless otherwise noted.
● denotes Permanent Reference Monument
○ denotes Permanent Control Point

Town Place Ph. I
Via Verde 0323-304
42/76